

Current News Events on Google Maps



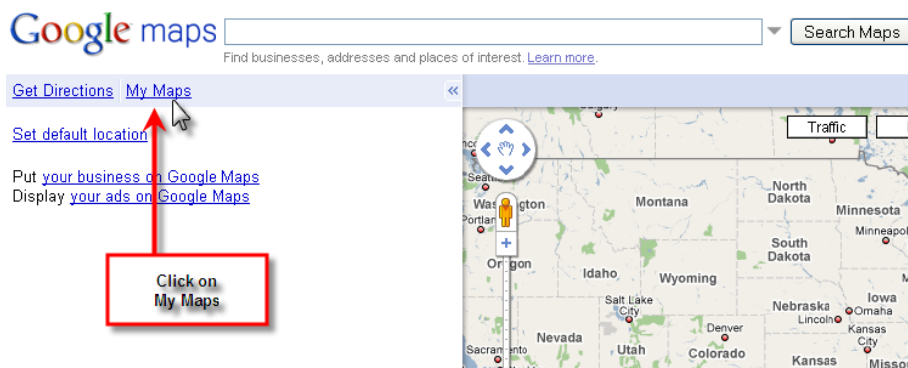
Students are asked to contribute a current news event over the course of a school year. Each news event is added and marked with a placemark in Google Maps. Students are categorizing the events as well as providing a short summary which are added to the placemark.

The map provides a visual and is a medium to further explore geography, information literacy and global awareness. Questions such as these arise:

- In what category do most news events we added fall?
- In what continents and countries are the news items in?
- What area of the world do we know or hear the least about? Why?
- How can we expand our horizon to cover more areas of the globe?

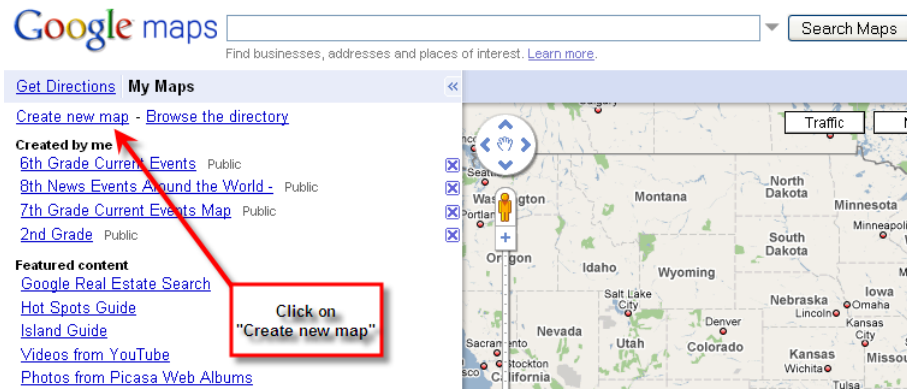
Guide to creating your own Google Maps News Events with your students.

1. Create a google e-mail (<http://www.gmail.com>) for yourself
2. Create a google e-mail for your students to use. The entire class will use this username to sign in to edit the map.
3. Sign in with your google account into Google Maps
4. Click on “My Maps”

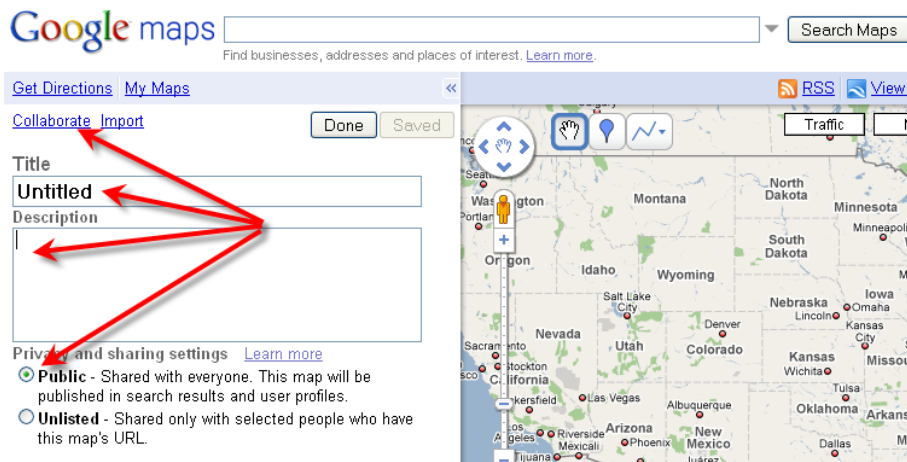


Current News Events on Google Maps

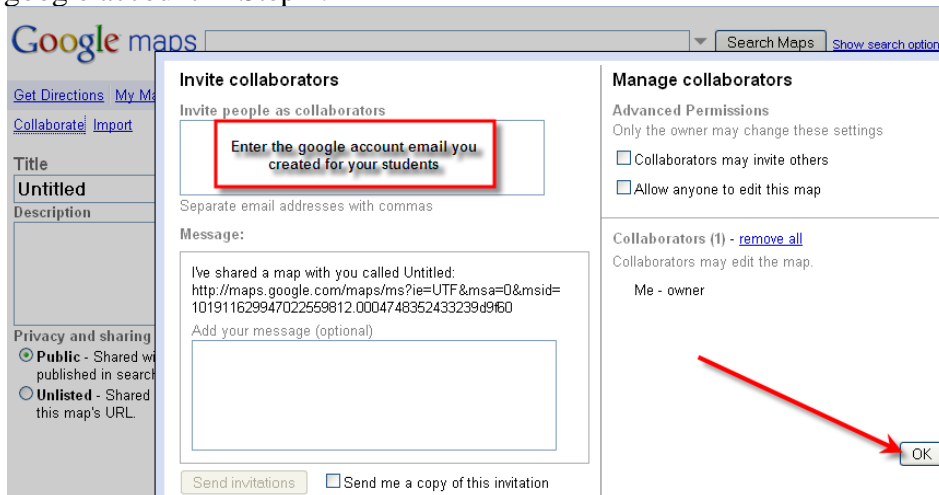
5. Click on “Create new map”



6. Enter a title



7. Enter a description
8. Choose between “Public” or Private”
9. Click on “Collaborate” and enter the email you created for your students while setting up the google account in Step 2.



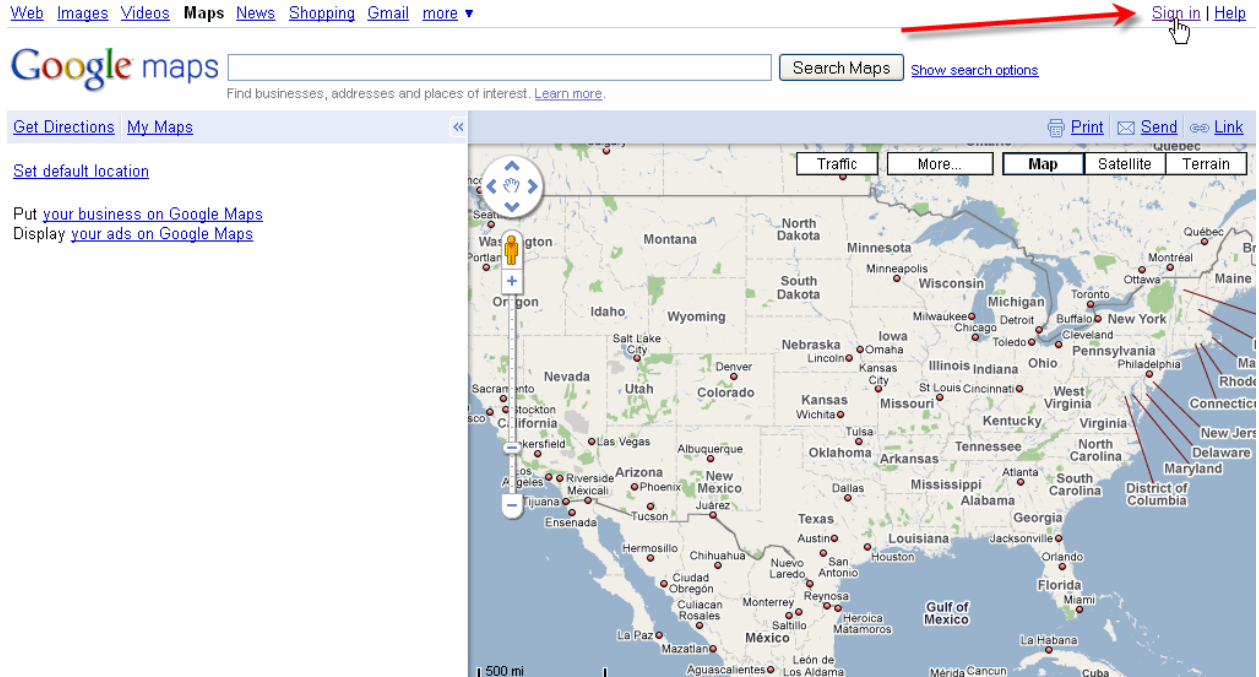
Current News Events on Google Maps

10. Sign into the student account e-mail and click on the link sent in the invitation. That will place the map you created in the student account "My Maps" list.

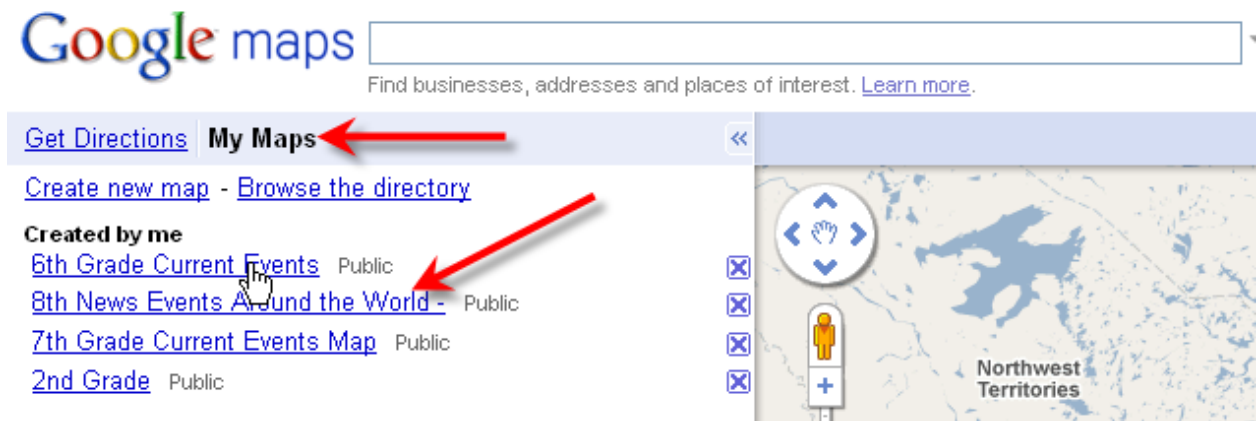
These 10 steps conclude the set up of the map and sign in accounts for you and your students.

Now is the time to demonstrate to your students how to log in and edit the map by placing placemarks, editing placemarks and choosing their own icons.

1. Go to Google Maps <http://maps.google.com/> and sign in

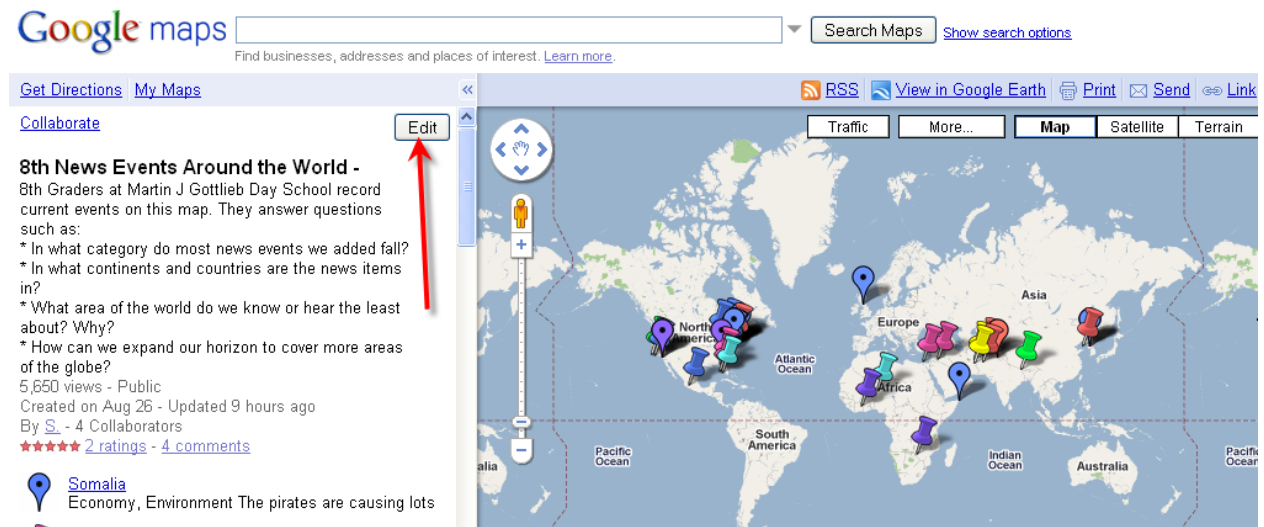


2. Click on My Maps, then choose the map you want to edit (the map you invited the student account to collaborate with should show up as a link!)

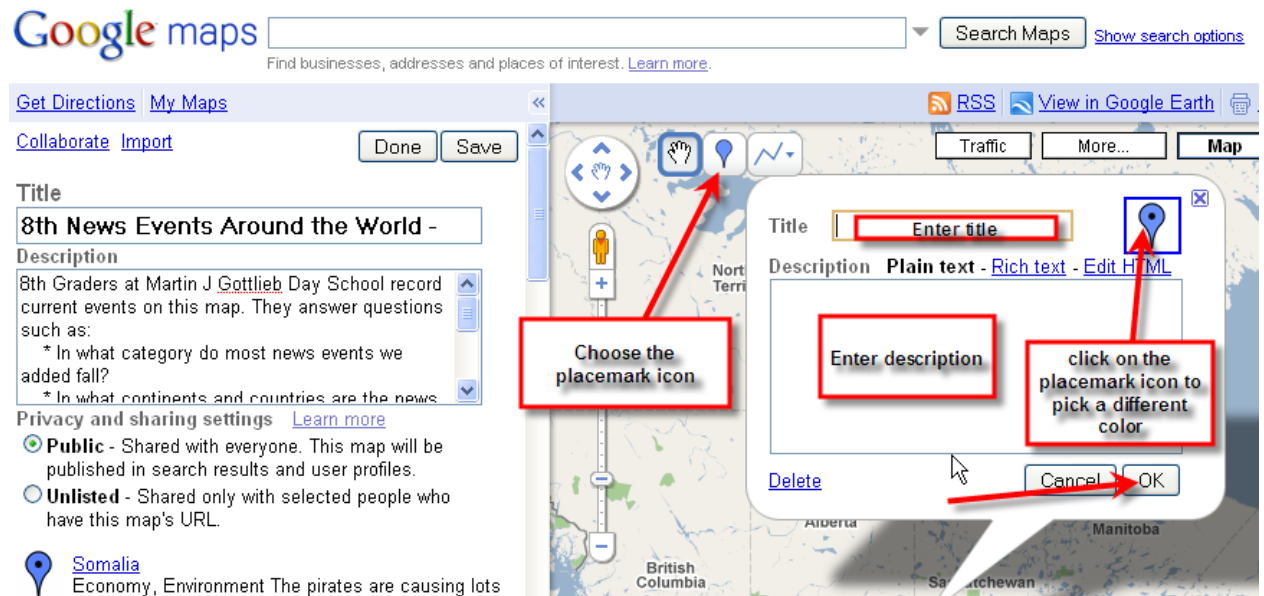


Current News Events on Google Maps

3. Click on “edit”



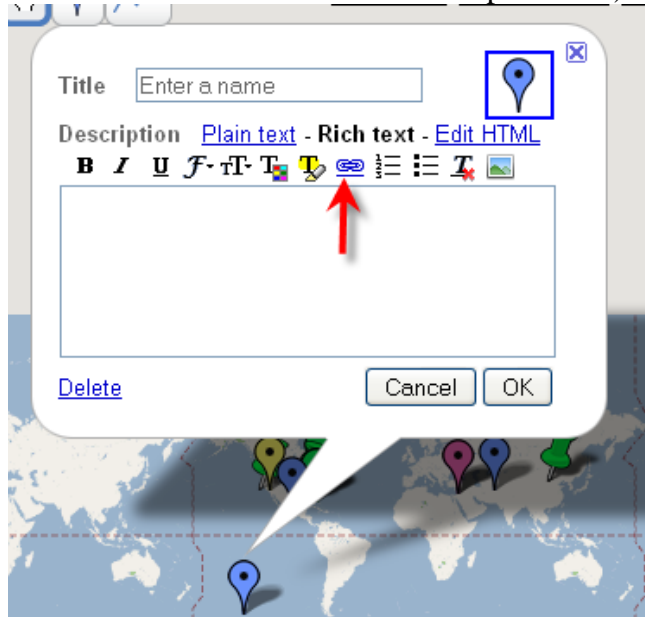
4. Students will zoom into the location on the map, where they want to place their current event
5. Click on the blue placemark, which will make a floating placemark pop up.
6. Click on the map to anchor the placemark to the map. This will make a new window pop up, where students will enter a title, description and choose a color for their placemark.



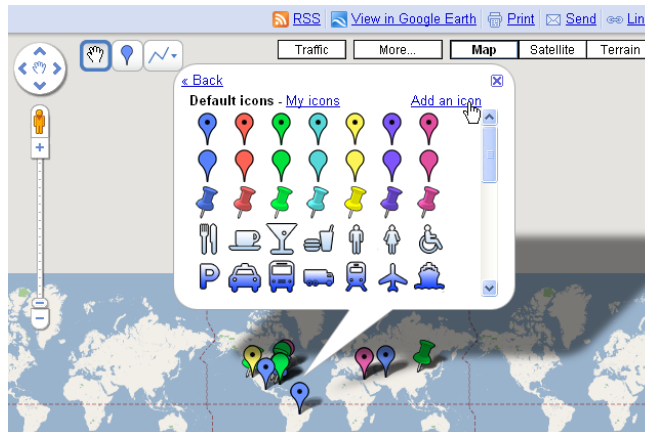
Current News Events on Google Maps

7. We chose to use for the:

- a. **Title:** Country the news event took place
- b. **Description:** First line: Enter the **category** the news event falls under (Politics, Entertainment, Environment, etc)
Then enter a **summary** of the news event (try to use 140 characters or less in an effort to practice precision and focused writing.
Enter the **link of the article**, the student is summarizing. (Click on Rich Text) in order to insert a link into the description area)



- c. **Icons:** Each student was assigned a different icon/color in order to know who contributed each news event.



Current News Events on Google Maps

8. You can now use a code to embed the map into your classroom wiki or blog.

